

Lower Floor

Upper Floor

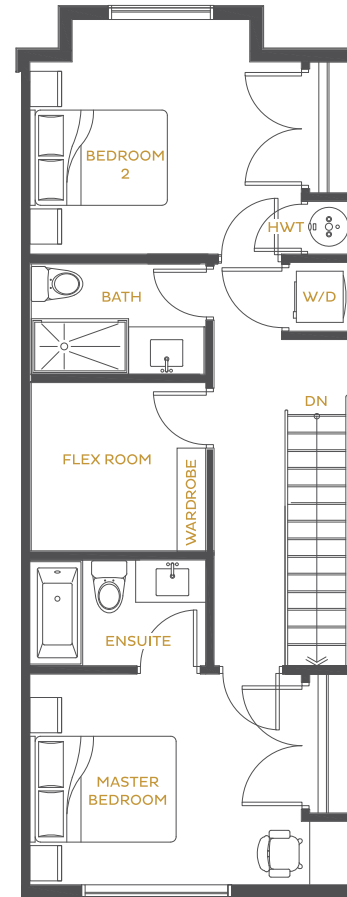
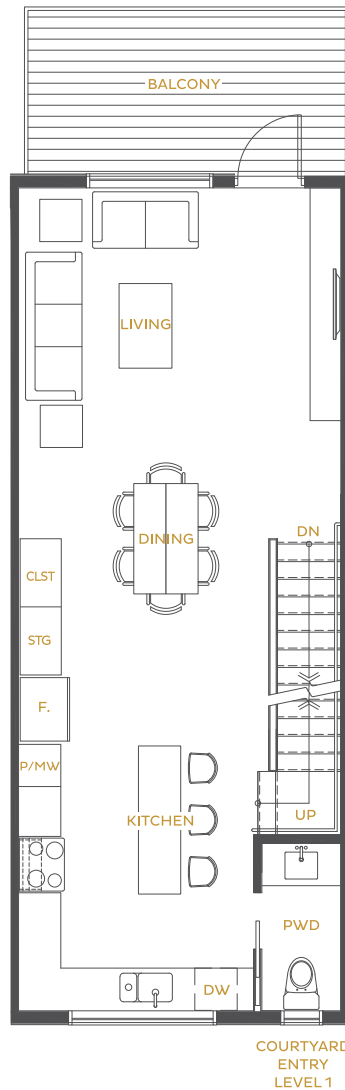
## Plan B4

2 Bedroom + Flex Room

2.5 Bath

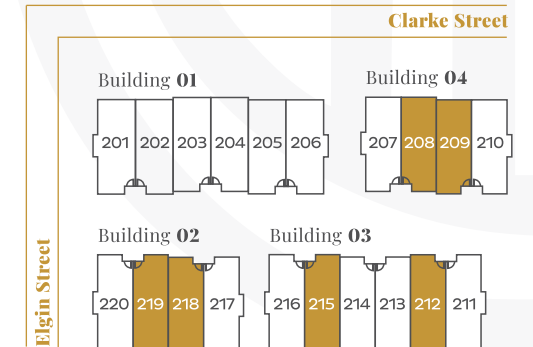
**Living** 1,293 sq ft.  
**Outdoor** 83 - 111 sq ft.  
**Total** 1,376 - 1,404 sq ft.

**Units** 208, 209, 212,  
 215, 218, 219



## Level 2 & 3

North 



In a continuing effort to meet the challenge of product improvements, the Developer reserves the right to modify or change plans, specification and features and finishings without notice. Floor plans, elevations, room sizes, decks/balconies/patios, box windows and square footage are approximate and may vary from the actually built home. Location of box window and balconies may differ from those displayed in floor plans. Floor plans may also be oriented differently than displayed. As reverse, flipped and/or mirrored plans occur throughout the development, please see architectural plans if any of this is material to your decision to purchase. Furniture and decor items are shown as an example only and are not included. Refer to the disclosure statement for specific details and information. This is not an offering for sale, any such offering can only be made with the applicable disclosure statement and agreement of purchase and sale E.&O.E. Marketing And Sales By Pilothouse Real Estate Inc. [www.pilothouseinc.com](http://www.pilothouseinc.com)